

### Taito Vewlix disassembly guide.

Every cab I buy I dismantle, clean and re-assemble for four specific reasons:-

1. Second-hand Japanese cabs stink as smoking is still allowed in arcades.
2. They're usually pretty dirty (unless your supplier has serviced them first).
3. You get to check all the electrics are safe and if anything needs repairing/replacing.
4. You always find something inside a used cab - usually loose washers/nuts.

So today I've gone from this....



To this....



And this....



And back to this....



## How to strip a Vewlix.

You will need a cross-point screwdriver (preferably magnetic so you don't drop the screws when you remove them) and a small set of sockets (I used one of those screwdriver sets with interchangeable heads & sockets).

### Removing the control panel.

Unlock panel, hinge open control panel section.



Remove the two large screws at the edges, hinge rear section open.



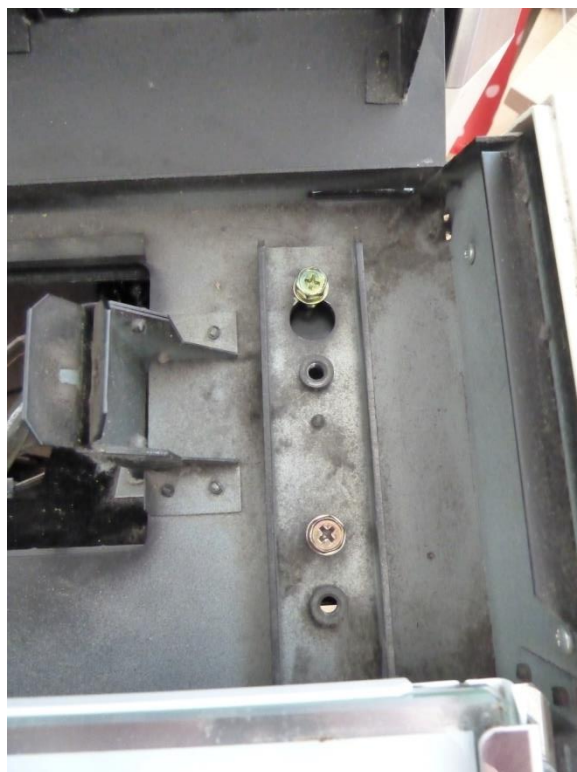
Disconnect cables for IO PCB and light (if fitted) that go through hole in right corner and tuck them into the base.

There are 4 bolts holding the control panel in place:-

Left set.



Right set.

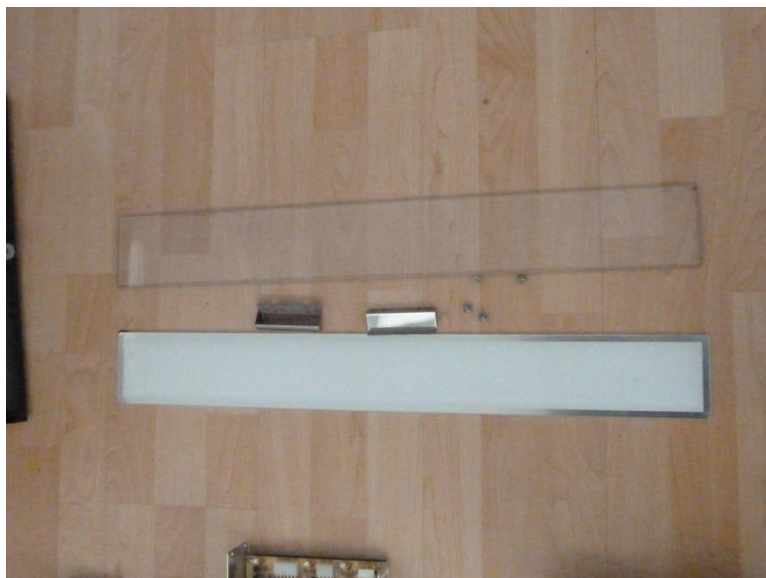


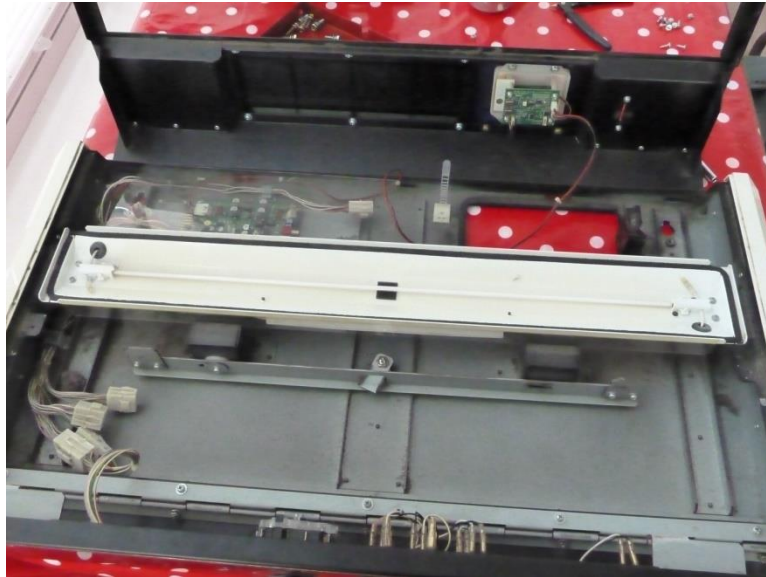
Remove the front one of each set and loosen the rear one - push the panel towards the screen slightly and you can lift the whole control panel assembly off.





Remove 2 screws holding the metal glass-clips in place and remove from both ends, you can then remove the glass and diffuser.



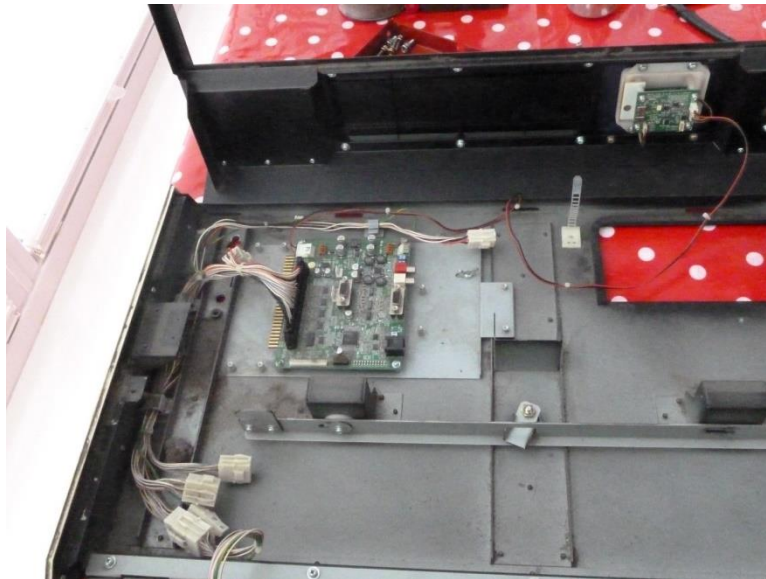


Remove the two screws at both ends on the light strip and it can be removed.

NB : some models won't have a light installed – you can fit an LED strip and power it from the 2-pin cable.



Remove wingnut, unclip cable ties and unbolt earth connection and the JVS/Fastio PCB and loom can be removed.



To remove the end plastic trims - undo 4 screws and they pull off...





**Removing the marquee section.**



Remove 6 screws from the curved black plastic rear surround and it will pull off backwards.



This reveals the bracket that supports the marquee and LED strip.

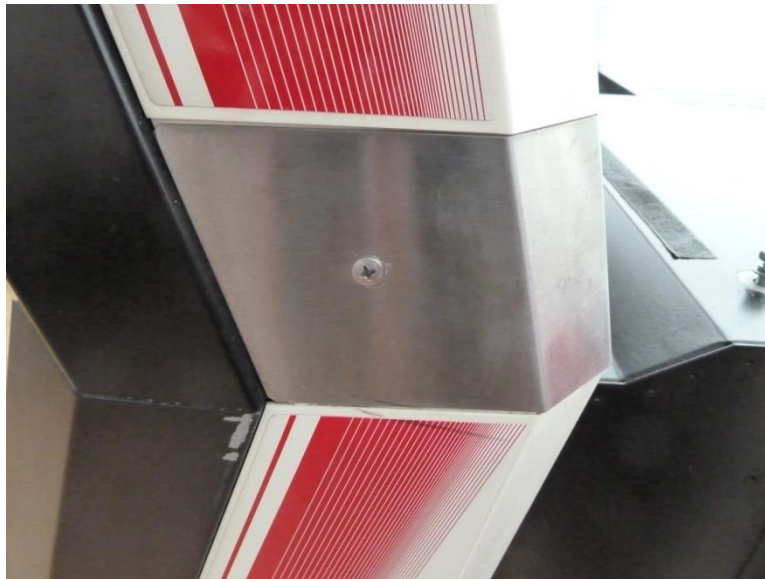




Remove the 2 black screws on the rear that line up with the silver strip at the top of the plastic trim - this releases the metal side trim, remove it and put to one side. If you have a C, F, Diamond there is a 2-pin connector inside the left trim panel, disconnect it (12VDC supply to LED strip in marquee).



Remove the screw from the metal bracket and repeat for the other side.  
Remove the screw in the middle of the metal plates at control-panel height on side trim.



You can then lift the top side trims off, exposing the sides of the monitor surround.



The reason for doing it this way around is there is a screw holding the front marquee trim in place and if you drop it - it goes all the way down the inside of these panels - by removing them you can put your hand under the end-plate and catch it if it falls out.

**Now back to the top....**

The metal plates that hold the marquee in place are attached by 2 small nuts, undo them and the metal plate can be removed - now you can access the screws that hold the front in place.



Remove the 4 screws along the top and the 2 at the sides of the white trim - you can then remove the front trim and the Vewlix plastic plate (be careful as once the front trim has been undone it'll fall out and could break).

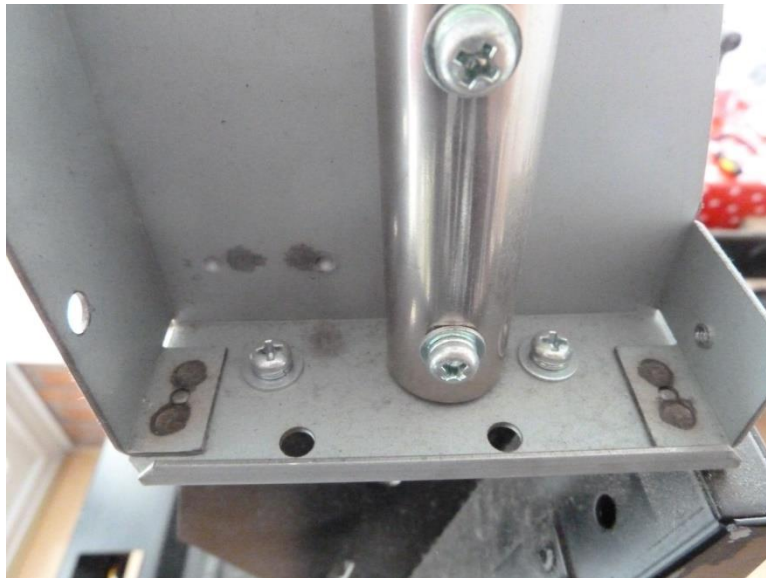




### Removing the top hoop.



There are 2 screws at each end - undo them and the hoop will lift off (assuming you disconnected the power cable earlier).



Inspect the top of the cab, there are 3 screws holding a piece of metal that curves around to the front - remove the screws and metal plate.



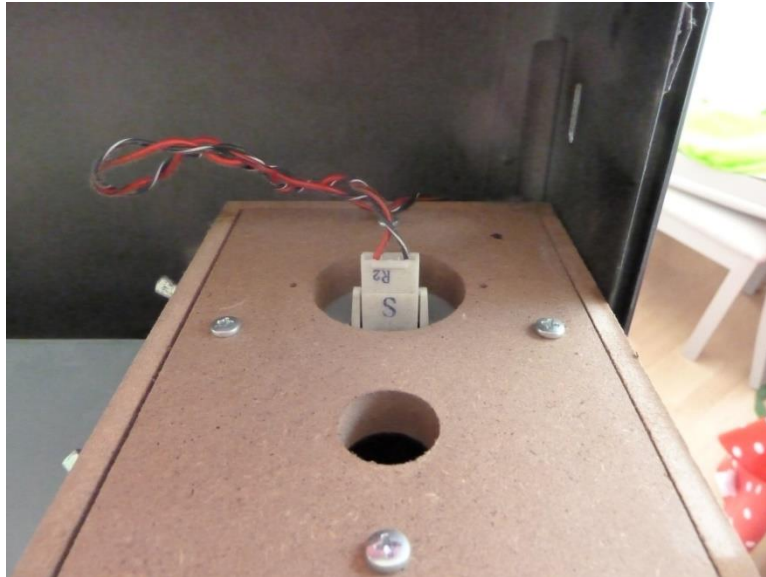
The plate covers the gap between the top of the cab and the top of the upper pair of speakers (as it's larger if screen is Yoko than when it's Tate).

**Removing the speakers & screen (for a Horizontal monitor).**

Remove 4 long screws that fasten the upper speakers to the legs, tilt the speaker unit forwards and unclip the speaker cables from the rear of the boxes - you can then remove the entire speaker/blanking plate unit out.







Turn cab round and on the rear upper section there is a metal panel secured with 2 screws - remove them and the panel.



Disconnect the cables from the right-hand side of the screen (Power, Remote, DVI (Optional), VGA). Then undo the 4 bolts.



Turn the cab around and take hold of the sides of the monitor frame, lift it out and put it somewhere safe (where you're not going to knock it over).



Remove 2 long screws holding these brackets in place - note which way they are mounted - repeat for the other side.

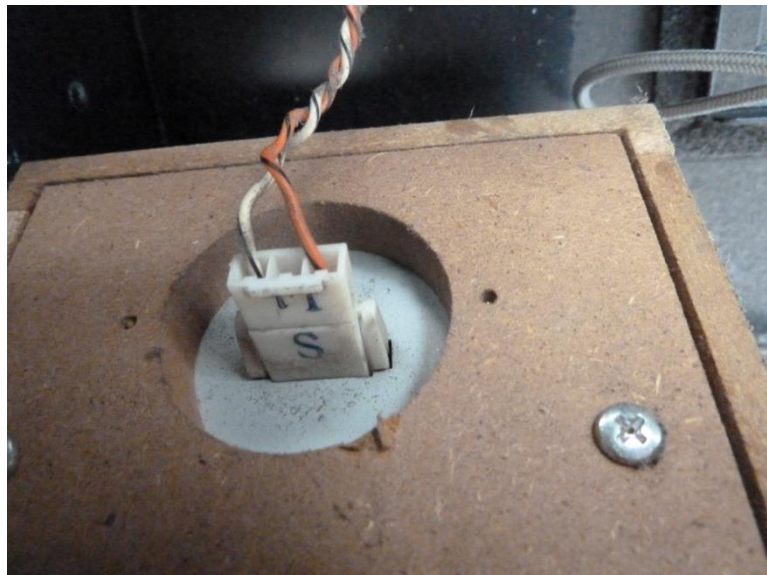


Remove 3 screws holding the long metal plate that runs along the bottom of the speaker unit and remove the metal plate - mine was stuck down with spilt liquid and arcade filth.





Undo this clip and undo the wires connected to the back of the speakers and you can remove the lower speaker system.



**If you've followed the guide this far your cab should look like this....**

Front view...



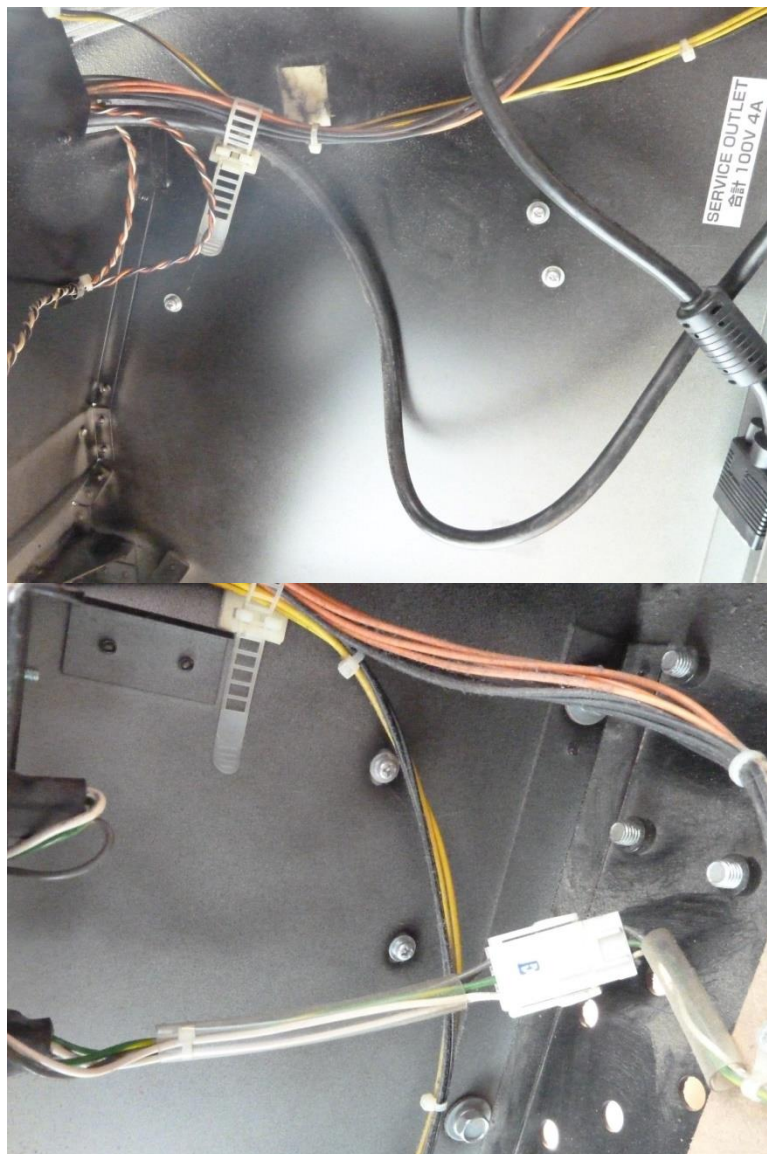
Side view....



Unlock the rear lower panel and if fitted remove the 3 screws securing it in place (if you have no key - you can remove the nut from the lock from the front of the cab. Remove the PCB shelf.



On the side panels there are 5 screws, 2 near the bottom, 2 in the middle and one higher up - these hold the lower side trim in place remove all 10 screws and the side panels lift off.







Disconnect and remove the 3 PSU's in the base - the 12VDC Aux PSU and 24VDC LCD PSU are mounted on 4 PCB feet - the Wai-Ya is screwed to the wood with 4 screws, loosen the 2 rear ones and remove the 2 front ones (as rear mounts are slots).



Aux 12VDC PSU 75W.



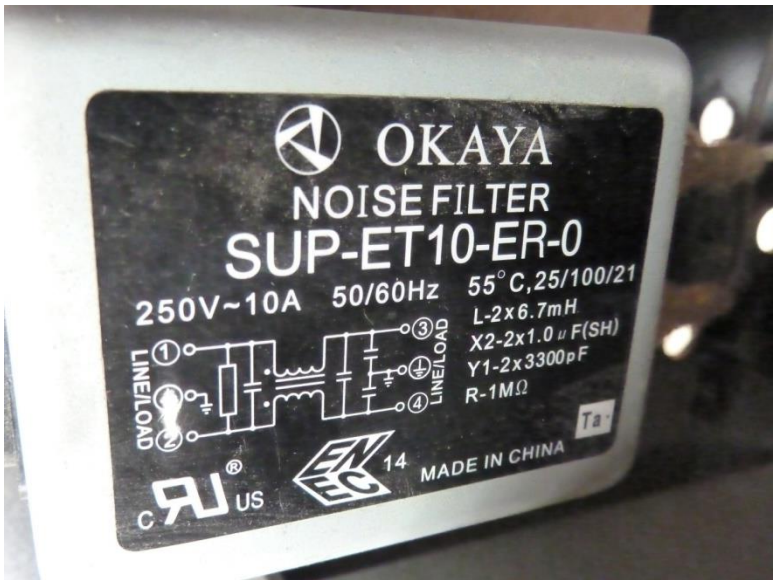
LCD 24VDC PSU 150W.



Wei-Ya P271 PSU.



Mains filter





The side-trims have metal brackets fastened inside, carefully undo the screws and scrub the panels & brackets clean with plenty of hot soapy water. remove any marks with magic eraser (you will need to re-polish the panels if you do). when you refit the screws DO NOT OVER-TIGHTEN them as the plastic pillars they fasten into will break!



**If you've followed the guide this your cab should look like this....**



**Check for debris inside, clean everything, reassemble and play....**

**Reassembly is just a matter of reversing the process for dismantling it.**

My recommendations :-

- 1) Refit the top marquee section first as it's easier to retrieve dropped screws at this point.
- 2) When you fit the white front marquee retainer, fit the two middle screws first - then fit the edge ones as the extra flex you have makes lining up the screw-holes simpler, also refit before putting the side trim back on in case you drop the screws.
- 3) Fit the top pair of speakers loosely so you can tweak them so no gap above monitor.
- 4) Make sure you don't trap any cables behind the rear speaker ports on the lower set of speakers.
- 5) Wear gloves when cleaning the plastics so you don't irritate your skin.
- 6) Watch out for sharp burrs when cleaning the inside of the cab, especially under the control panel ledge.

**Differences if monitor is TATE - To remove the speakers/Screen.**

Remove the top and bottom trim bars.

Remove cables from monitor via lower access hole in rear of cab.

Remove the screws for top/bottom speakers on left side, tilt forwards and unclip speaker cables, repeat process for right side.

Remove both speaker pods – you can now get a decent grip on the screen to remove it